

Crush Twice For LM and non-LM bifurcations

Osung Kwon

Heart Institute, University of Ulsan College of Medicine,
Asan Medical Center, Seoul, Korea

Case

Brief Case Summary

- A 71 year-old male
- Effort chest pain since 1 years, aggravated recently (CCS class III)

Past Medical History

- Hypertension: N
- Hyperlipidemia: N
- Previous PCI or CABG: N
- Diabetes: N
- Smoking: N
- BPH on medications

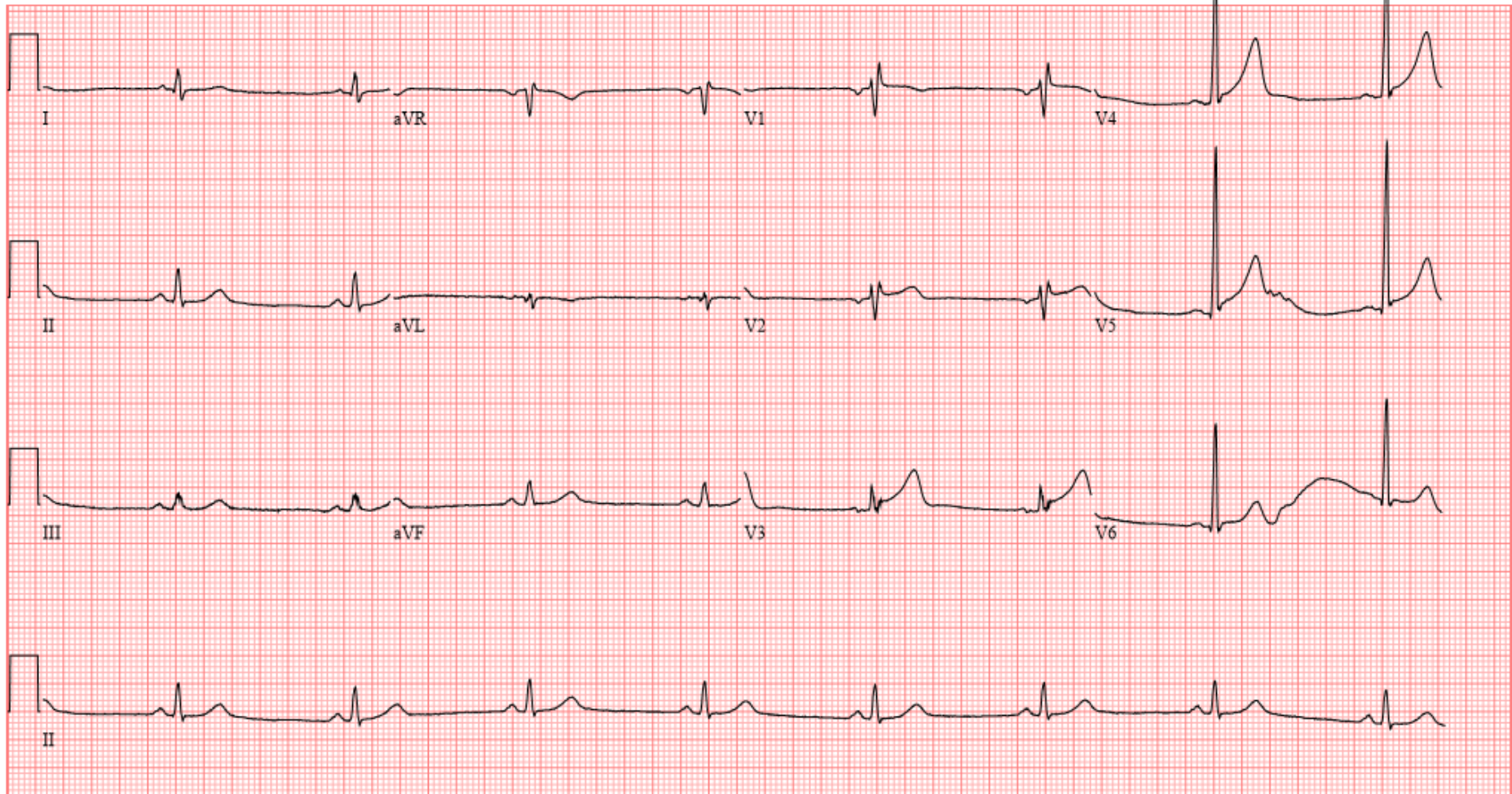
Chest X-ray



EKG

Referred by:

Newly Acquired



25mm/s 10mm/mV 150Hz 7.1.1 12SL 237 CID: 124

EID:Newly Acquired EDT: ORDER:

Page 1 of 1

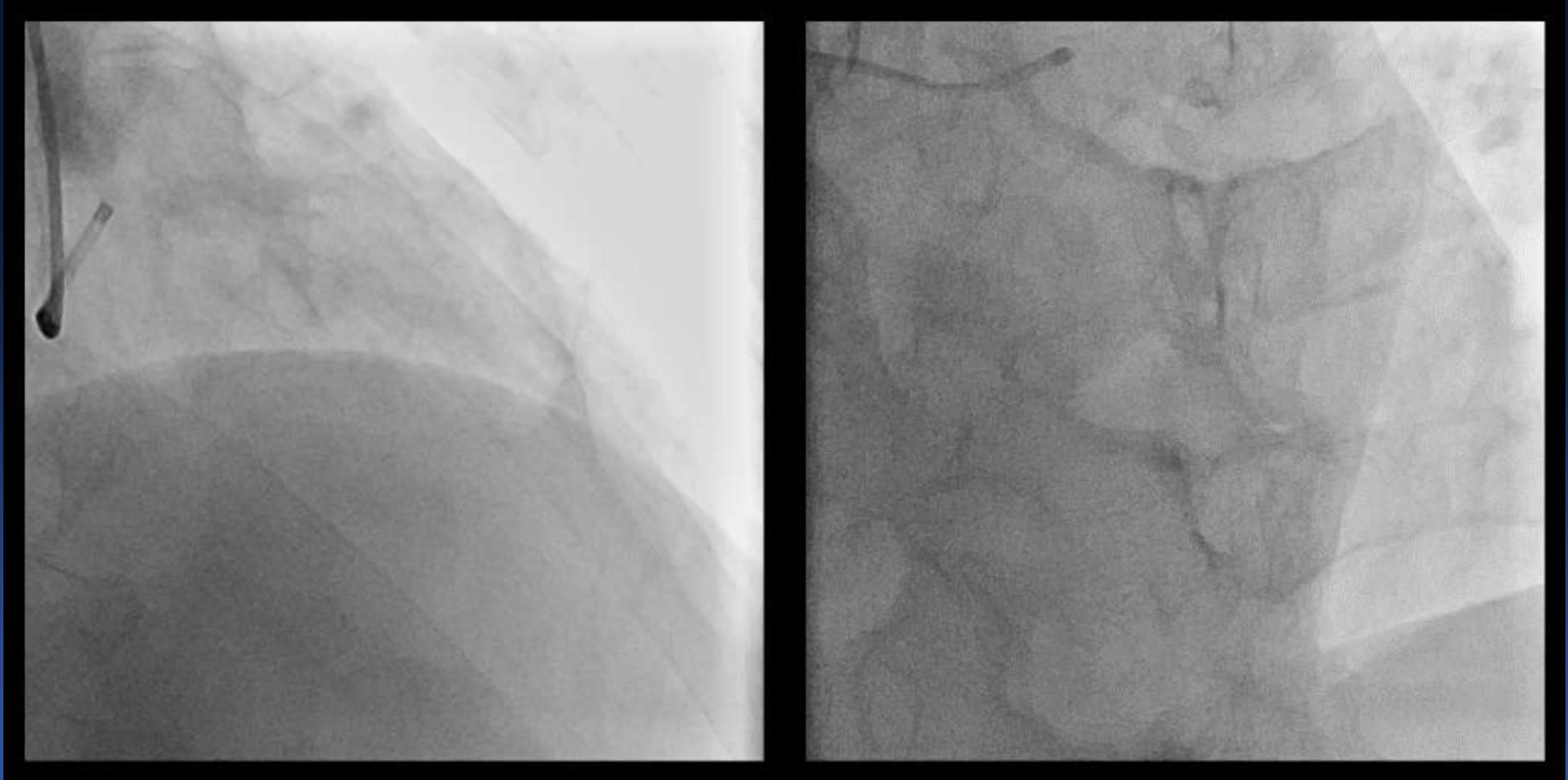
TTE

- EF 51%
- Akinesia of posterolateral wall
- Mild AR (grade 1)

CAG



CAG



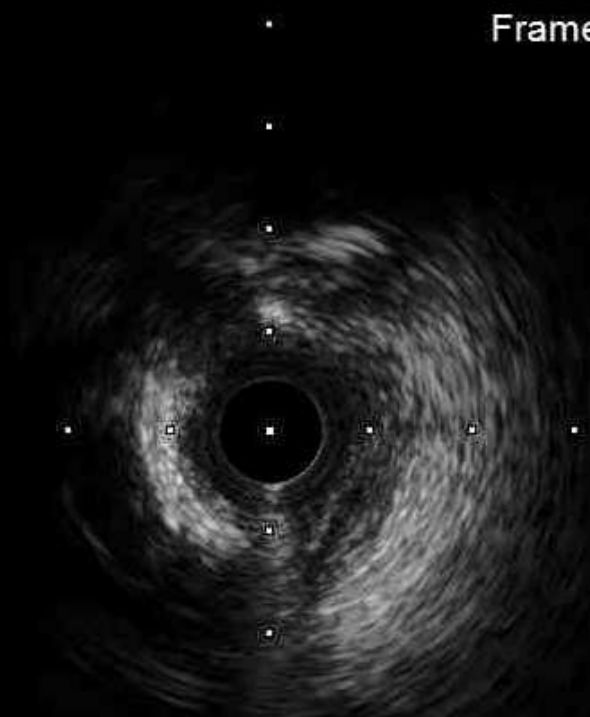
CAG



IVUS LCX



Frame 1188



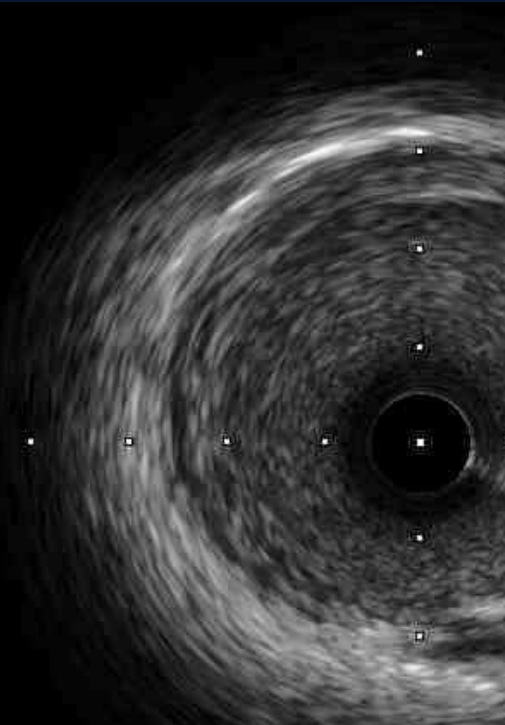
MLA
1.66 mm²

Frame 105



Distal RVD
3.25 mm

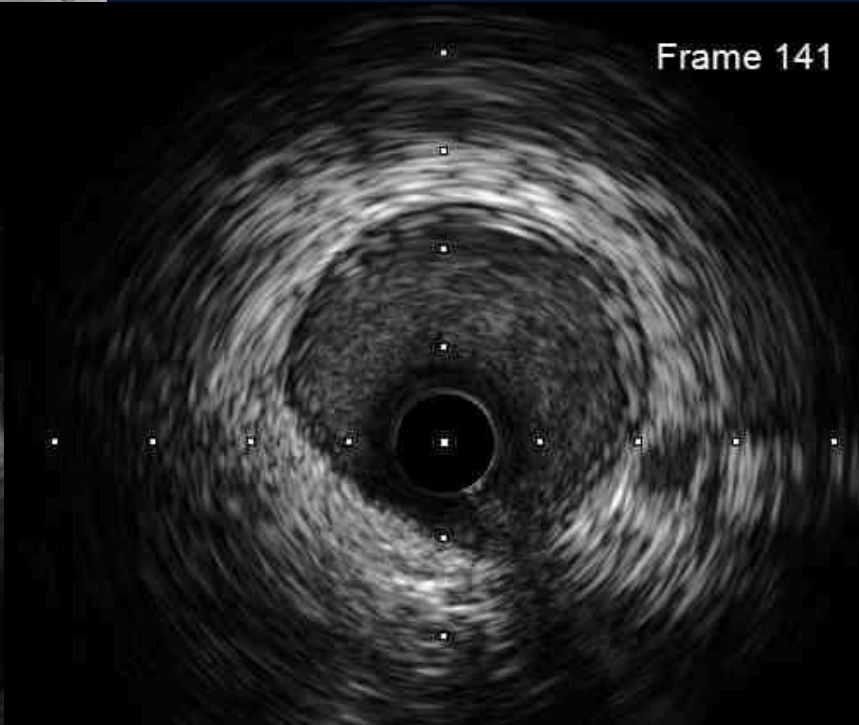
IVUS LAD



Prox. RV
5.33 mm



MLA
2.71 mm

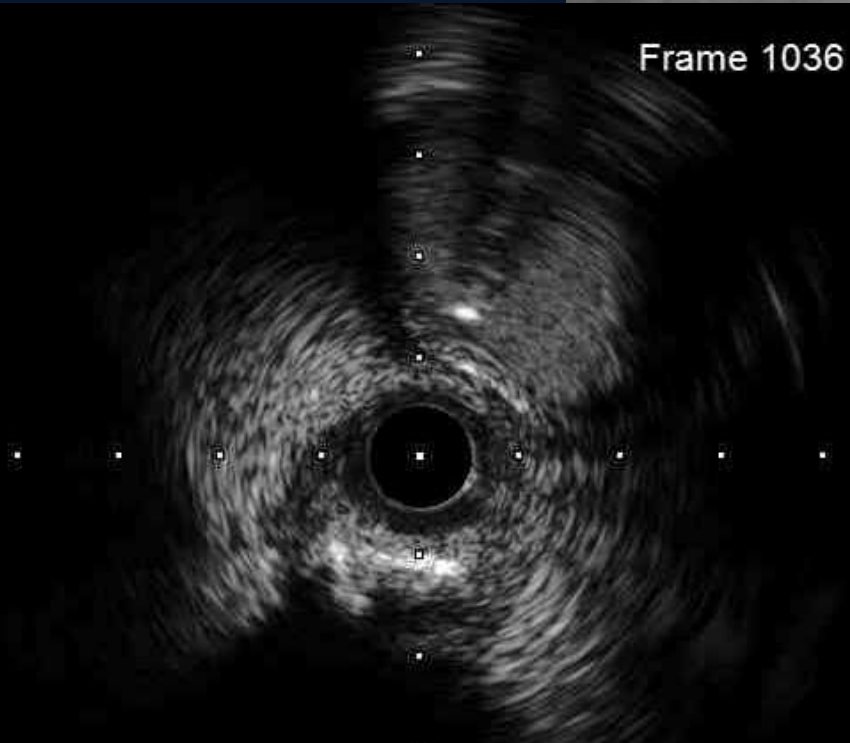


Distal RVD
3.52 mm

IVUS Di

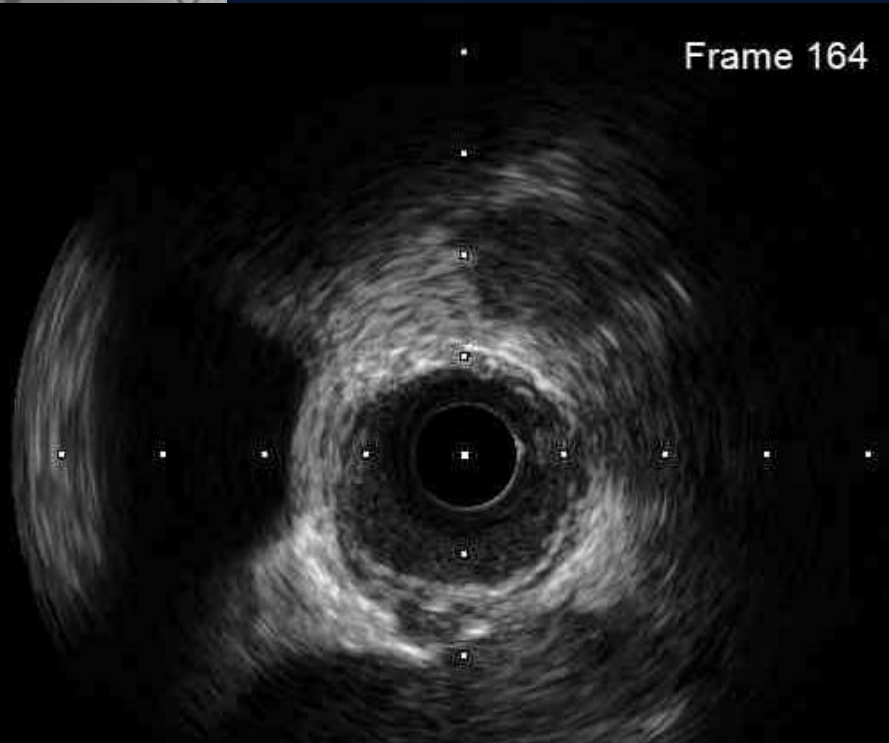


Frame 1036



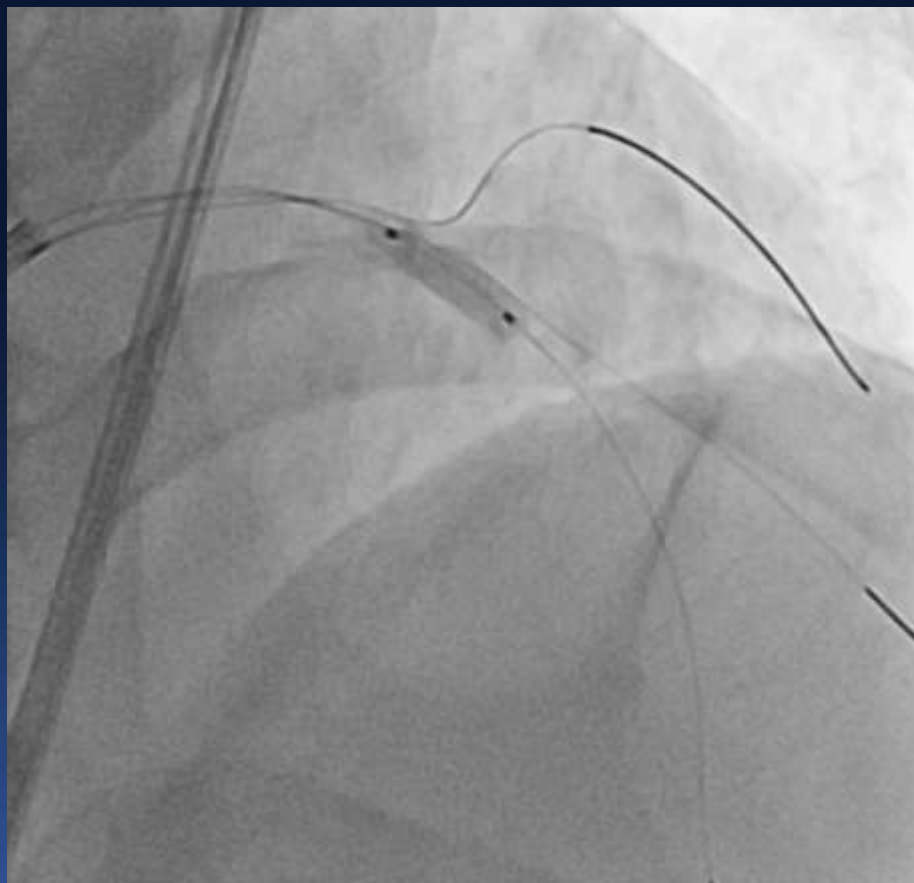
MLA
1.53 mm²

Frame 164



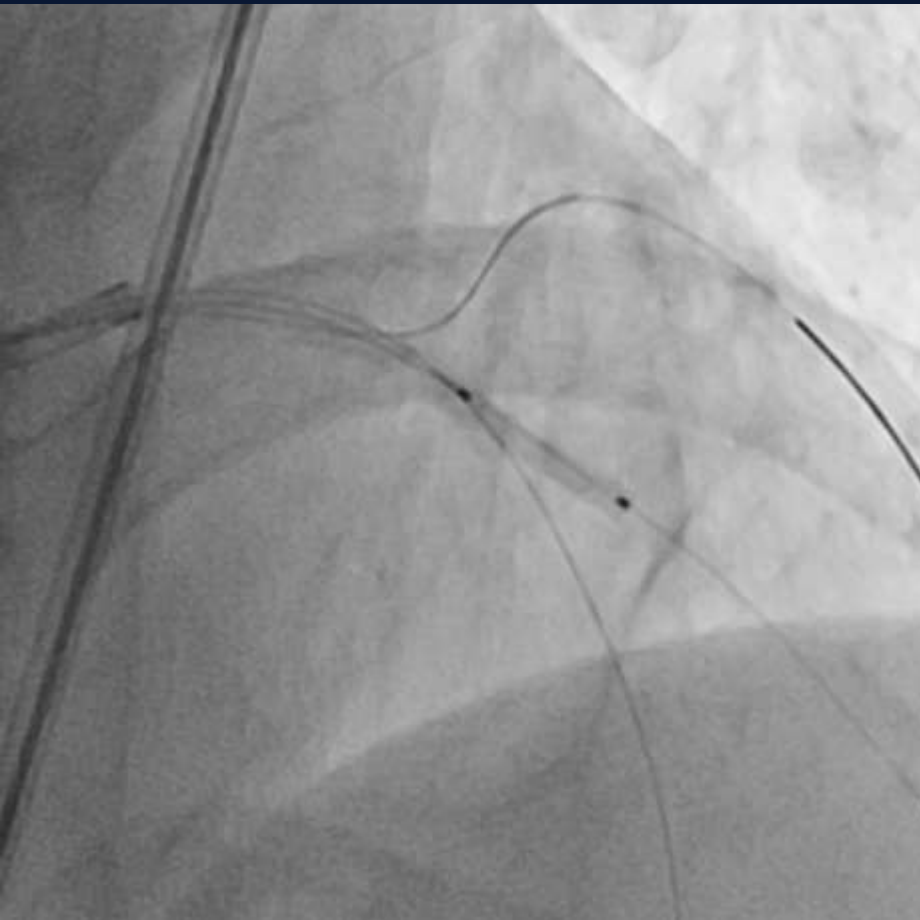
Distal RVD
2.46 mm

LAD

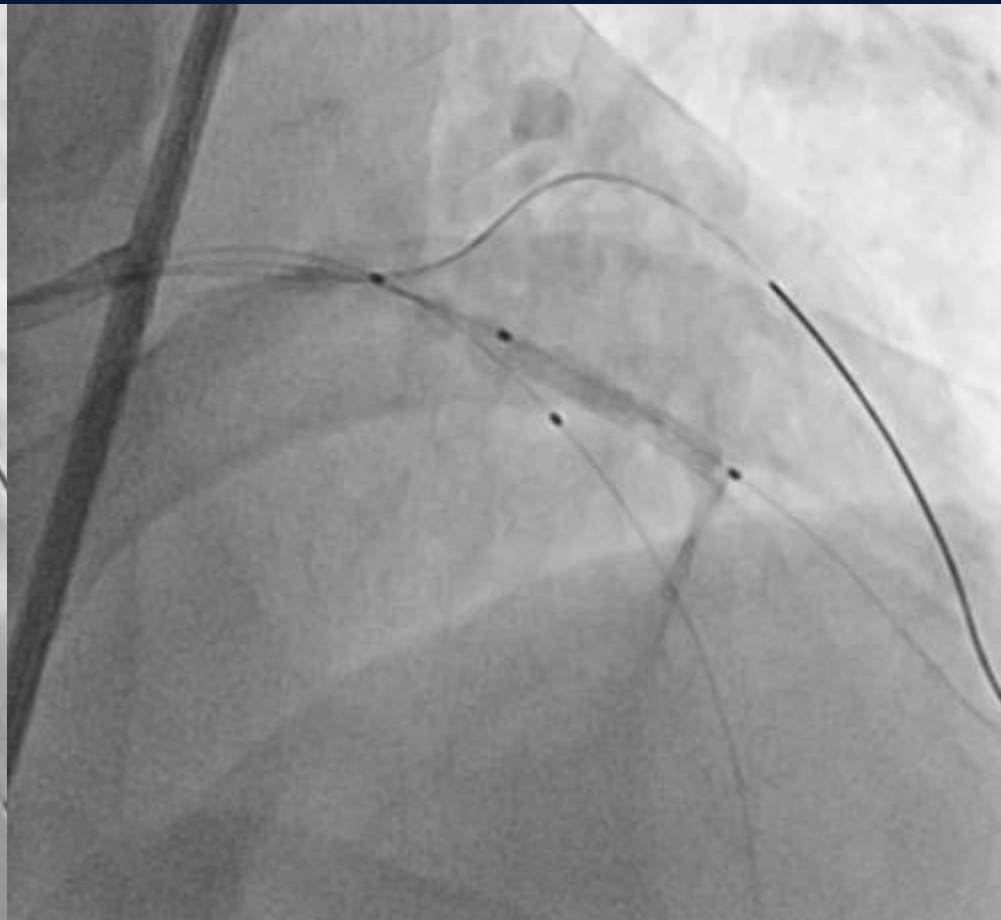


**3.5 * 10 mm
Cutting**

Di

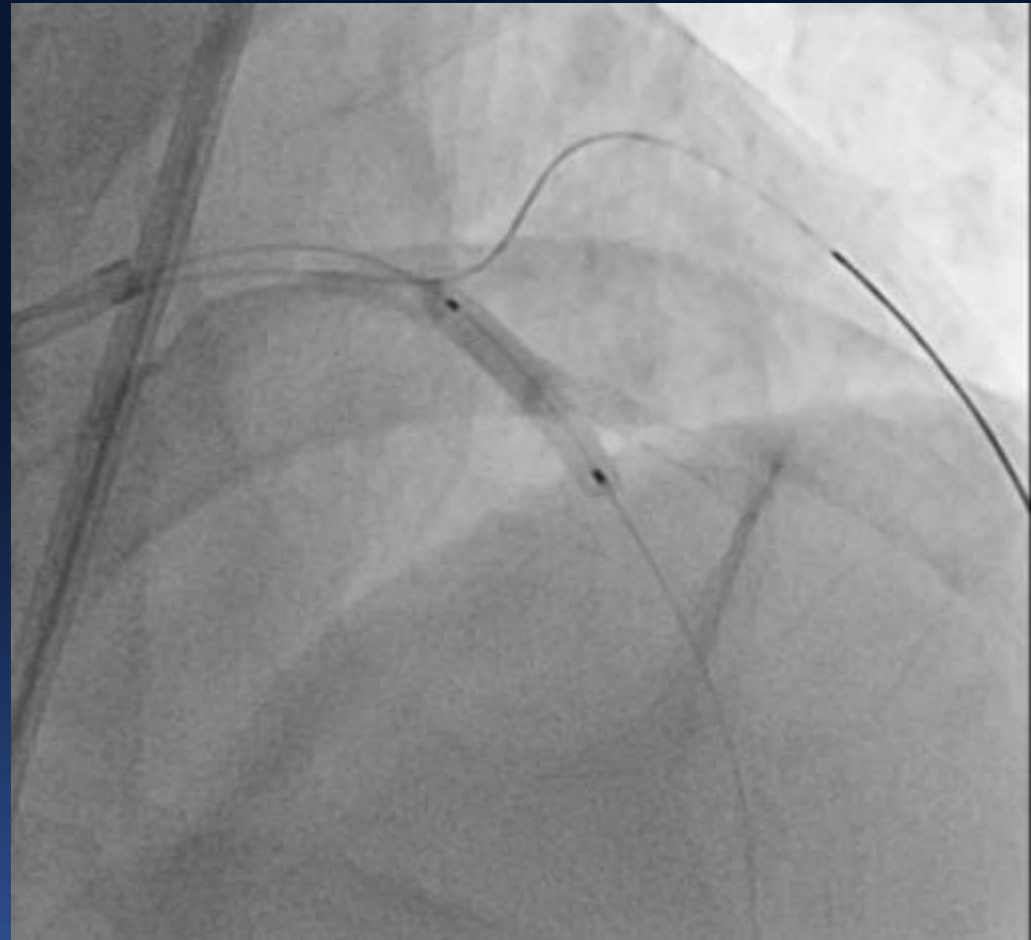


NC 2.5 * 15 mm
16 atm



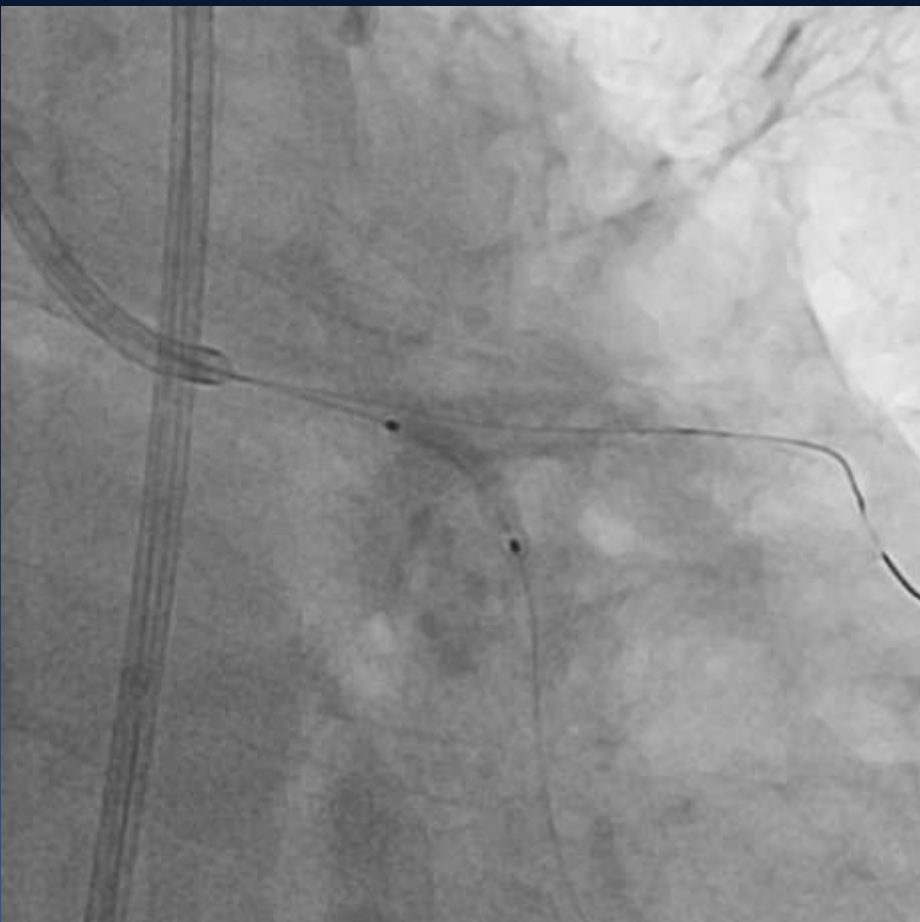
DES 2.5 * 18 mm

LAD / Di Balloon crush

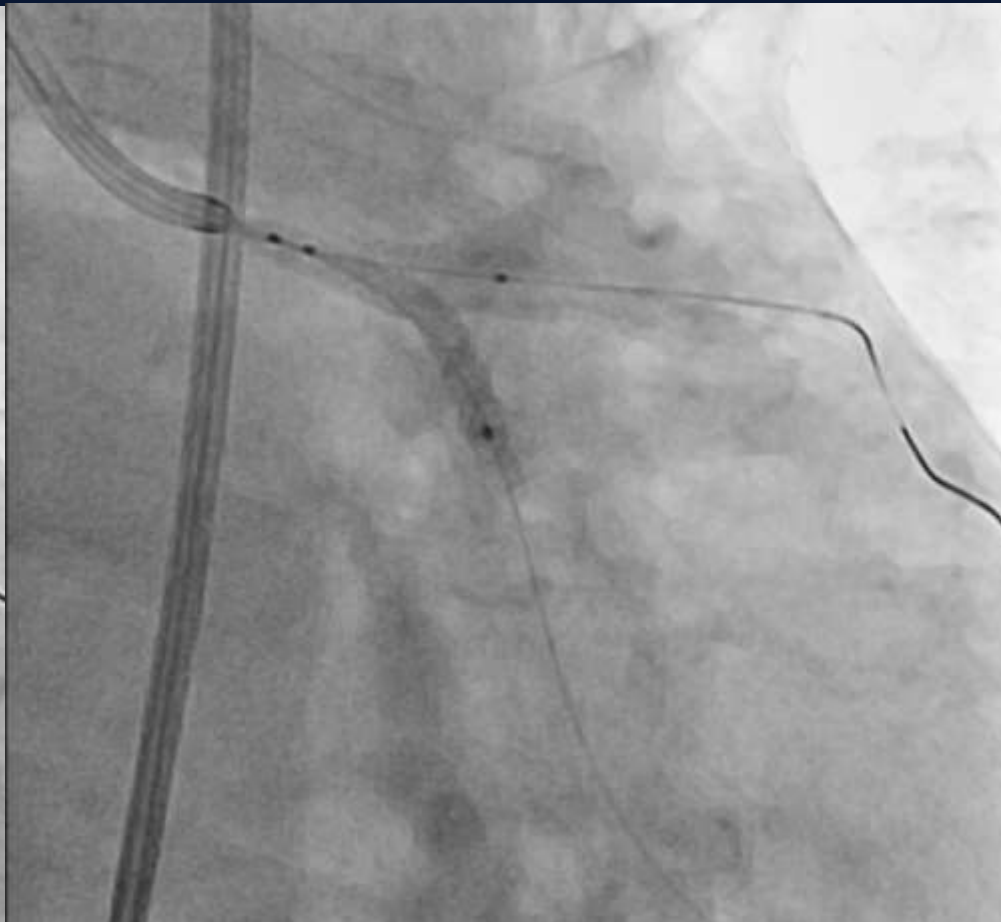


NC 3.25 * 18 mm
16 atm

LCX



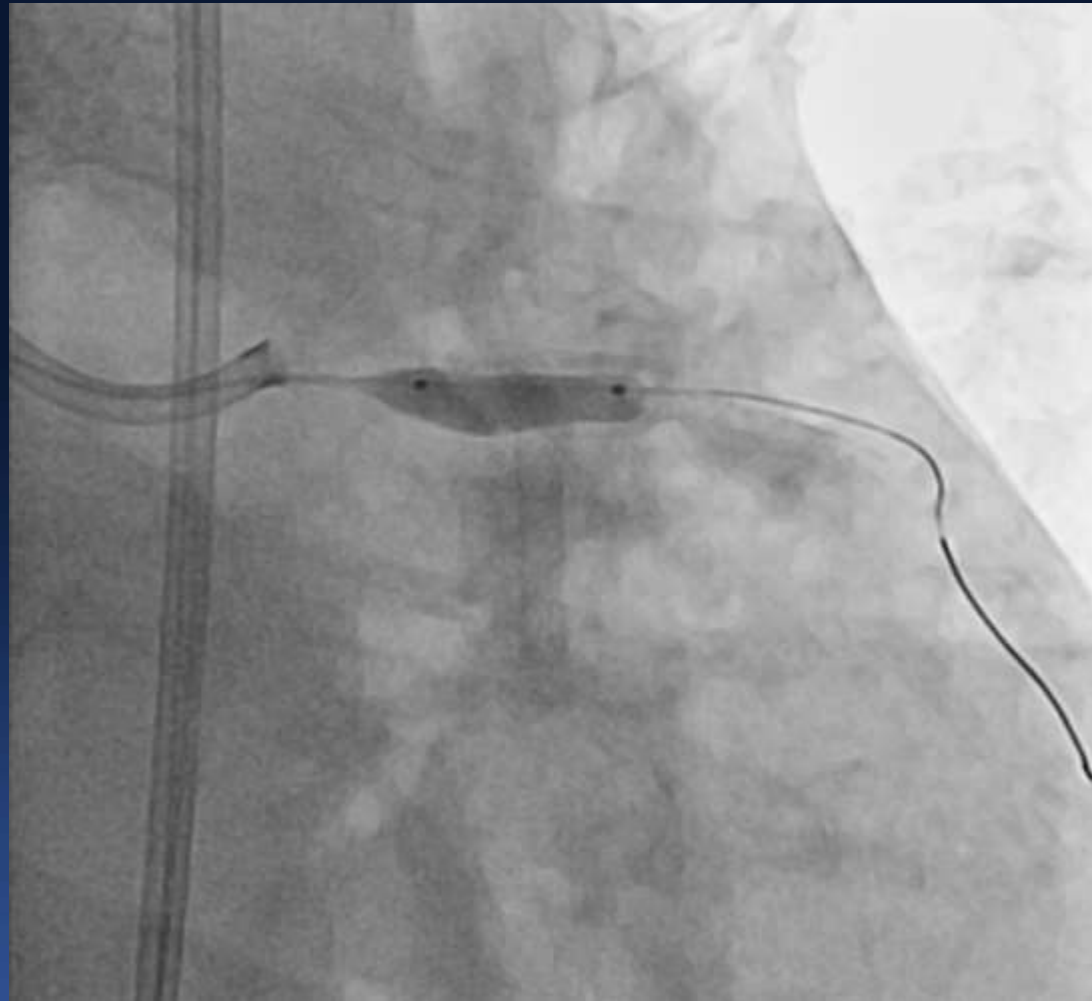
NC 2.5 * 15 mm
14 atm



DES 3.0 * 23 mm

LAD / LCX

Balloon crush



NC 4.0 * 15 mm
14 atm

LM-LAD

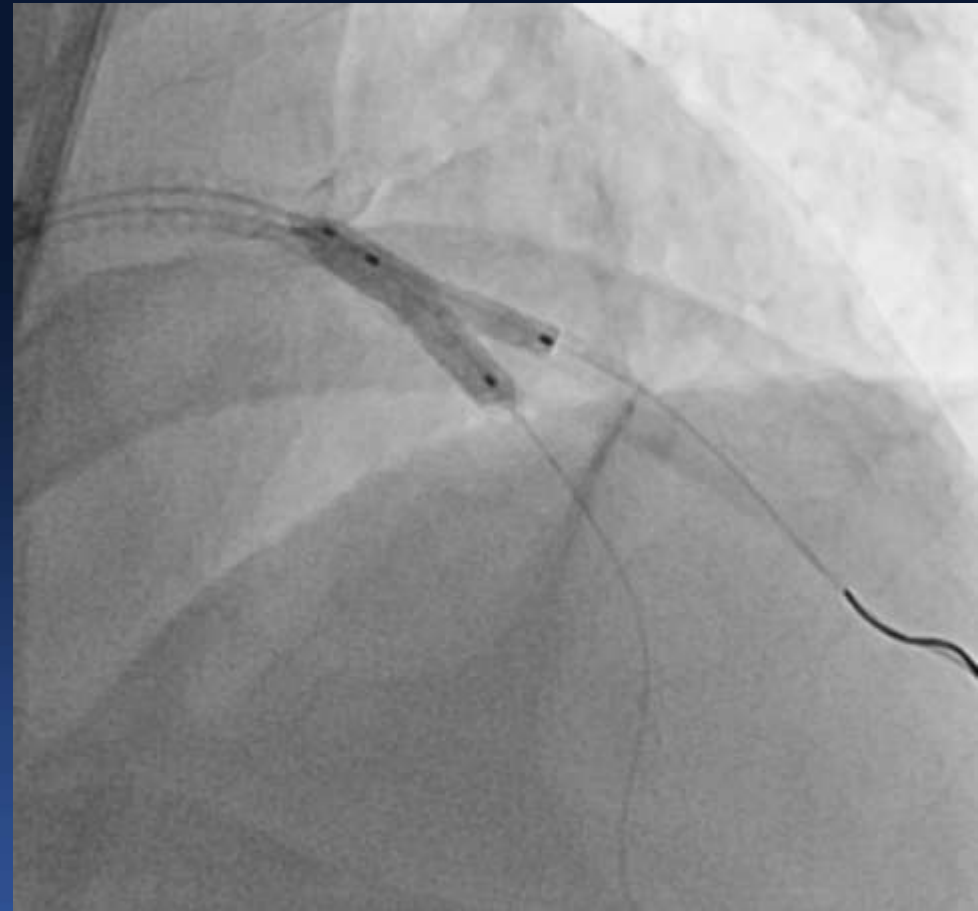


DES 3.5 * 38 mm



**NC 4.0 & 3.5
24 atm**

Kissing



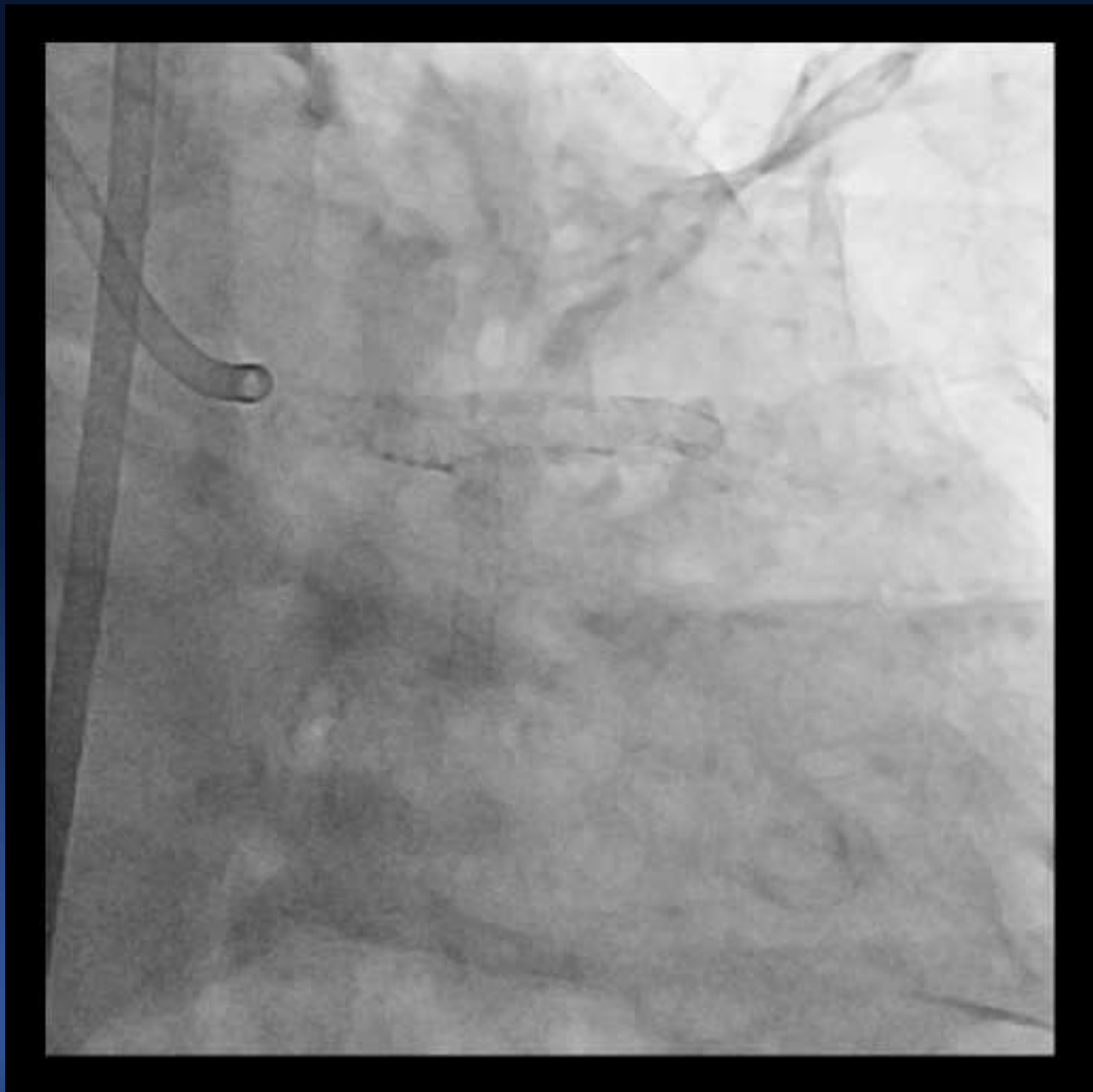
LM-pLAD NC 4.0 * 15
LM-pLCX NC 3.25 * 18

mLAD NC 3.25 * 15
Di NC 2.5 * 15

Final angiogram



Final angiogram

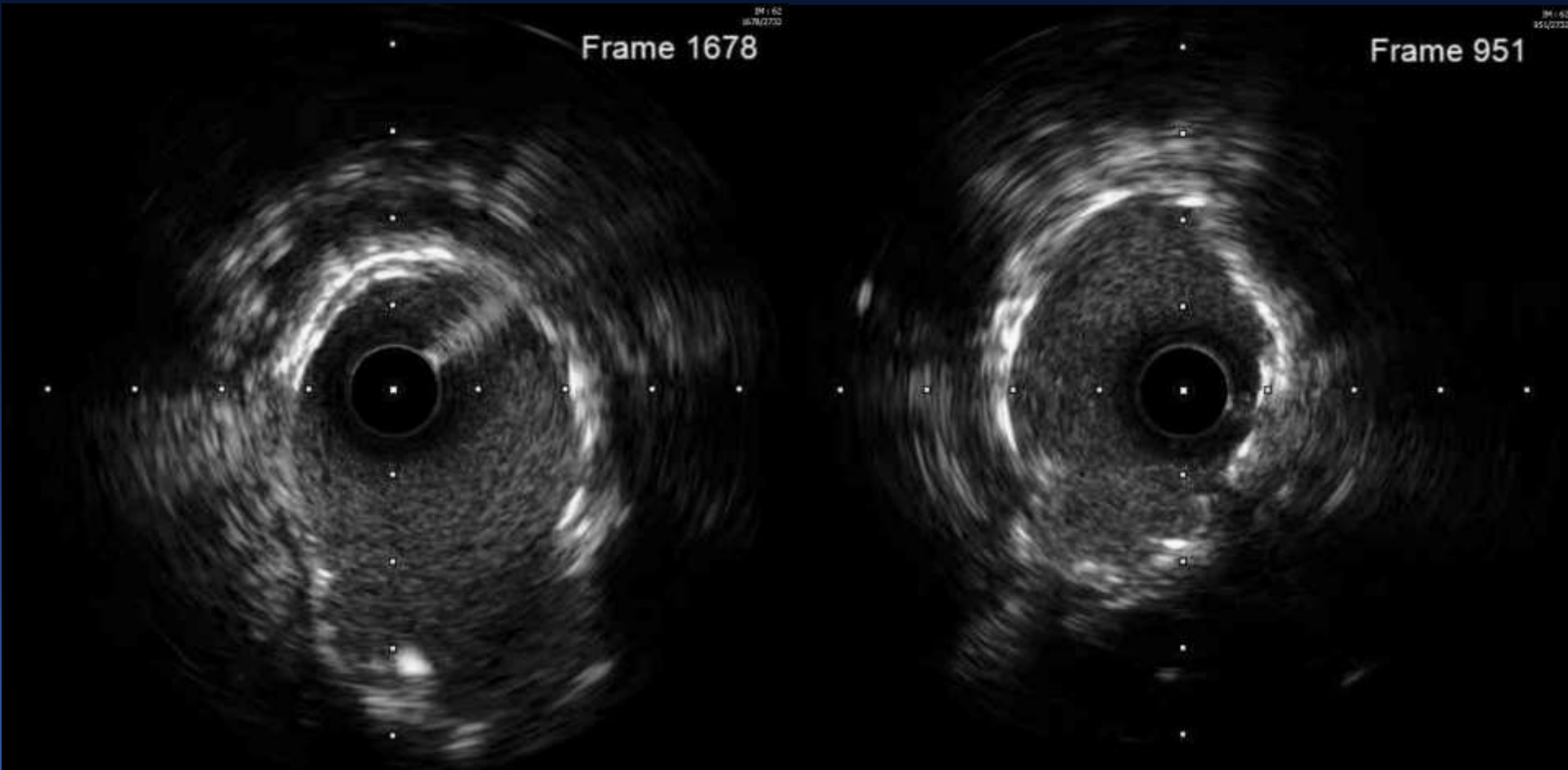


Thank you for your attention.



Appendix

Final IVUS



LAD-LCX

LAD-Di